

Magna Carta Update Meeting

A presentation from the
Magna Carta Surrey Partnership
to Runnymede Local Committee

Monday 24 February 2014



THE ROYAL BOROUGH OF
WINDSOR AND
MAIDENHEAD



Aim of the Project

To celebrate the 800th Anniversary of the Magna Carta being sealed in Runnymede, by improving the visitor offer and putting on events to raise the profile of the area.

Why?

- We have a unique heritage linked to the Magna Carta, which will be celebrated across the free world.
- To inspire local people, especially young people, and increase pride in the place where they live.
- Many visitors are expected, and we want to give them a warm and fitting welcome.
- To breathe new life into the local economy.
- To make people healthier by enjoying what the area has to offer.

How will this be achieved?

Legacy Location

Enhancing the local area,
without changing its character

Events

Inspiring visitors,
and raising the profile of the site

Education

Informing residents and stakeholders on the relevance
and importance of the Magna Carta

Consultation informed our vision

Aim of the project



Partnership collaboration



THE ROYAL BOROUGH OF
WINDSOR AND
MAIDENHEAD

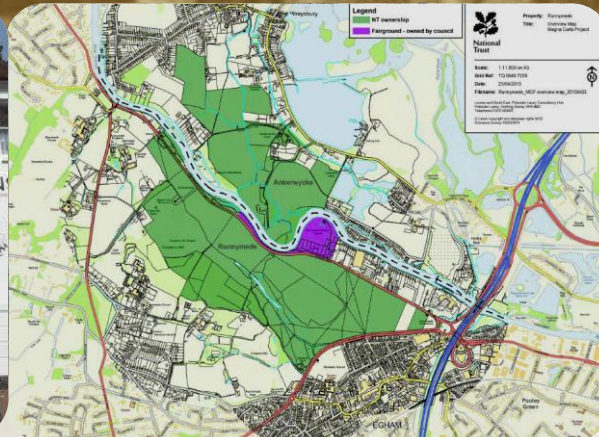


Partnership collaboration

Magna Carta Country

Branding the area as a visitor destination

- Linking local towns and the natural landscape
- Connecting both sides of the Thames
- A new commission in the landscape
- Improving existing facilities
- Engaging new audiences via digital technology



Egham - gateway to Magna Carta Country

Possible projects

- Assess and refurbish existing Magna Carta sculptures
- Signage linking main attractions with Runnymede site
- New sculptural elements and temporary interpretive features
- Consideration for Magna Carta events

1. Egham Station
2. High Street
3. Egham Museum
4. Egham Library

Existing Magna Carta monuments



Contains Ordnance Survey data © Crown Copyright and database right 2012

Temporary sculpture and street dressing



The Landscape & Visitor Info



Downloadable media for smart devices



Audio



QR codes



Connect to existing Apps



Touch screen interactive



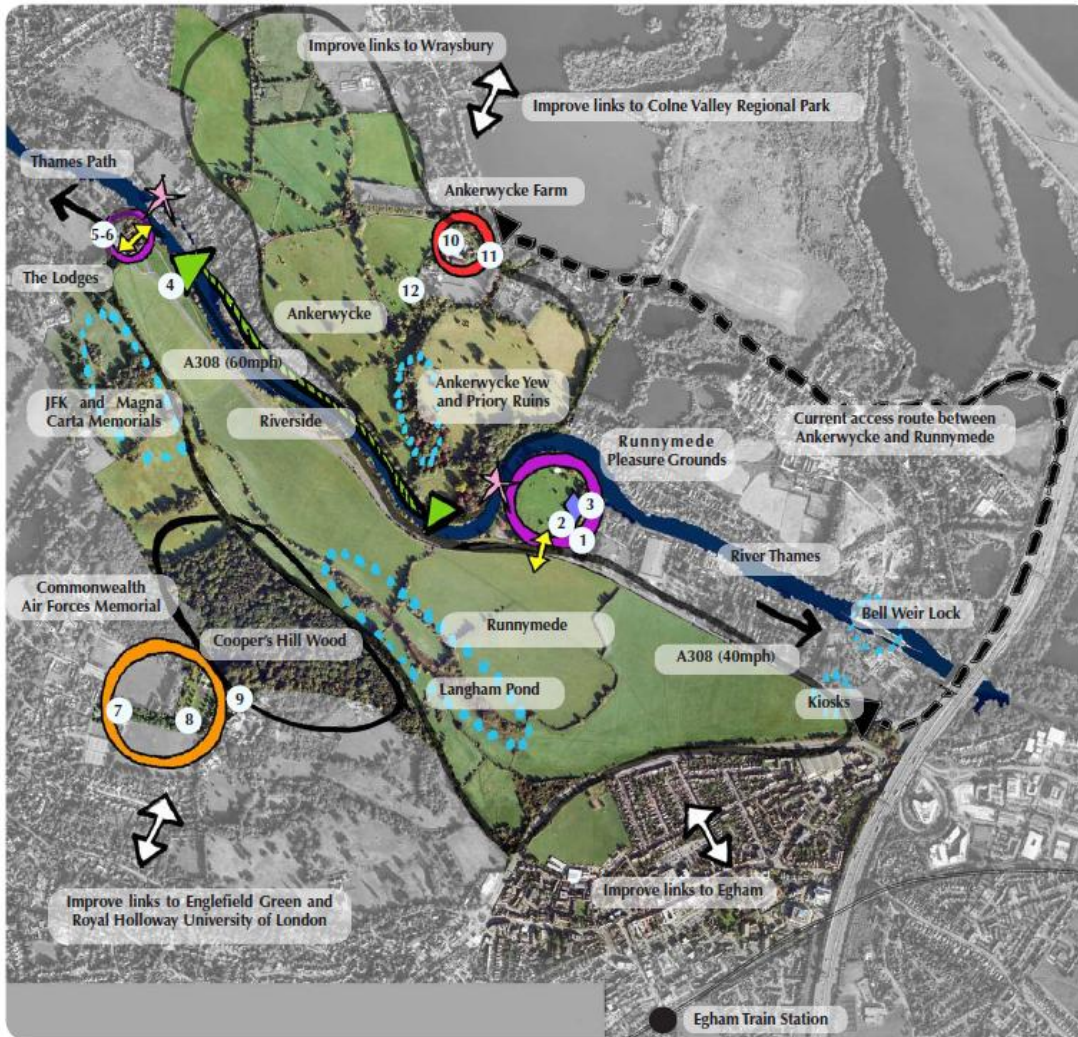
Layar Apps



Visitor Information

Landscape Analysis

The Masterplan & legacy

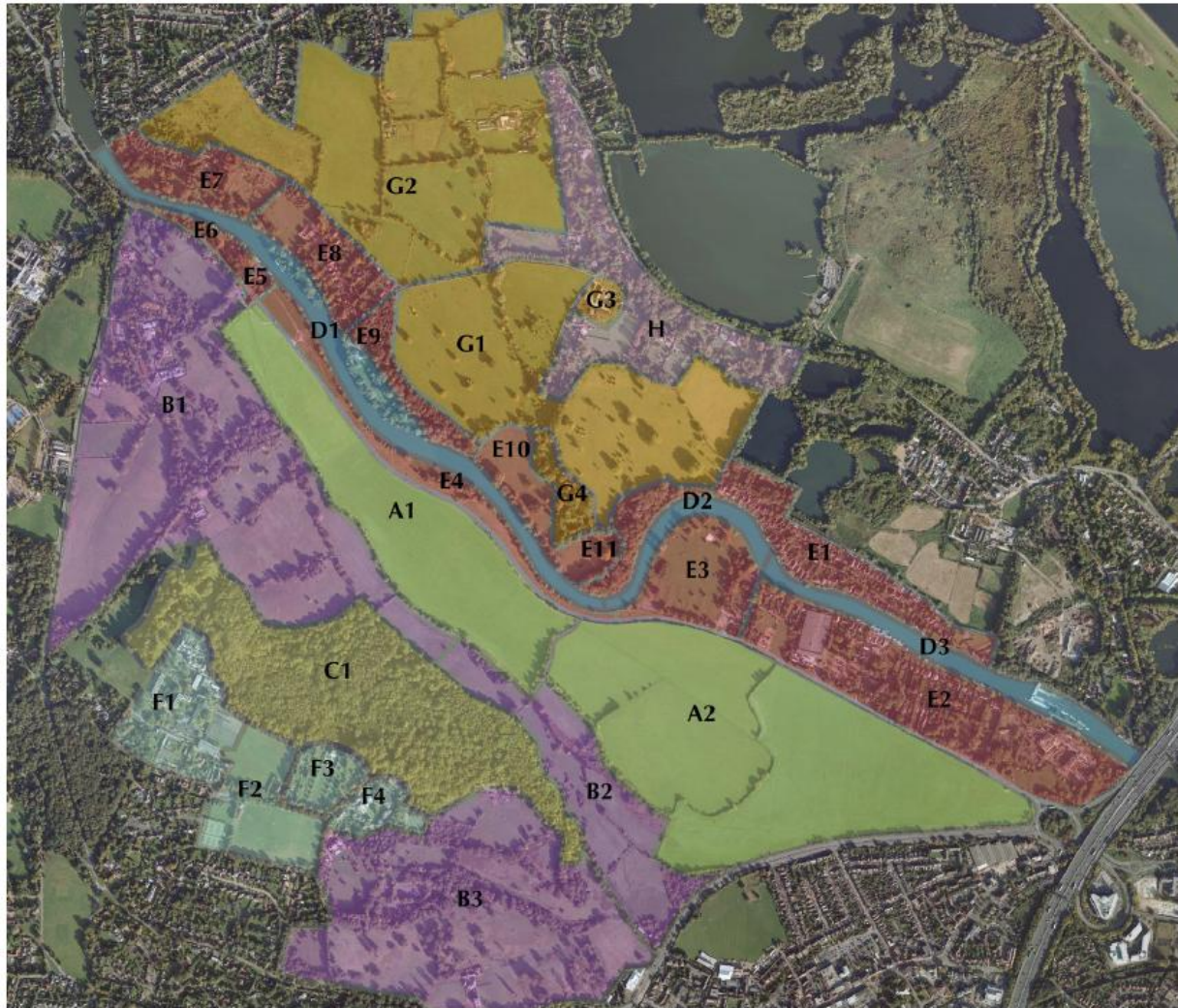


Key

- Visitor Facilities
Car Park/Refreshments/Toilets
- Visitor Facilities
Car Park/Toilets
- Visitor Facilities
Car Park
- Focal Points in the Landscape
- Playground
- Landing Stages
- Opportunities for ferry link between Runnymede and Ankerwycke
- Opportunities for improved pedestrian road crossing
- Opportunities for links with local and wider areas

0 200 400 m

Landscape Analysis



Key

A Open Meadow:

- A1 - Long Mead
- A2 - Runnymede

B Enclosed Meadow Slopes:

- B1 - Cooper's Hill Slopes
- B2 - Langham Pond
- B3 - Runnymede Park

C Wooded Slopes:

- C1 - Cooper's Hill Wood

D River Corridor:

- D1 - Long Mead Meadows & Magna Carta Island Reach
- D2 - Runnymede Pleasure Grounds Reach
- D3 - Yard Mead Reach

E Riverside:

- E1 - Hythe End Road Plotlands
- E2 - Yard Mead Plotlands
- E3 - Pleasure Gardens
- E4 - Long Mead Riverside
- E5 - Lodges, Boathouses & River Frontage
- E6 - Old Windsor Riverside
- E7 - Ankerwycke Riverside Orchard & Woodlands
- E8 - Magna Carta Lane Plotlands
- E9 - Ankerwycke Riverside Woods (West)
- E10 - Ankerwycke Riverside Meadow Parkland
- E11 - Ankerwycke Riverside Woods (East)

F Cooper's Hill:

- F1 - Former Brunel University Campus
- F2 - Playing Fields & Sports Ground
- F3 - Commonwealth Air Forces Memorial
- F4 - Kingswood Hall of Residence

G Enclosed Meadow and Parkland:

- G1 - Ankerwycke Historic Parkland
- G2 - Ankerwycke Grasslands
- G3 - Ankerwycke Farm
- G4 - Ankerwycke Priory Woodlands

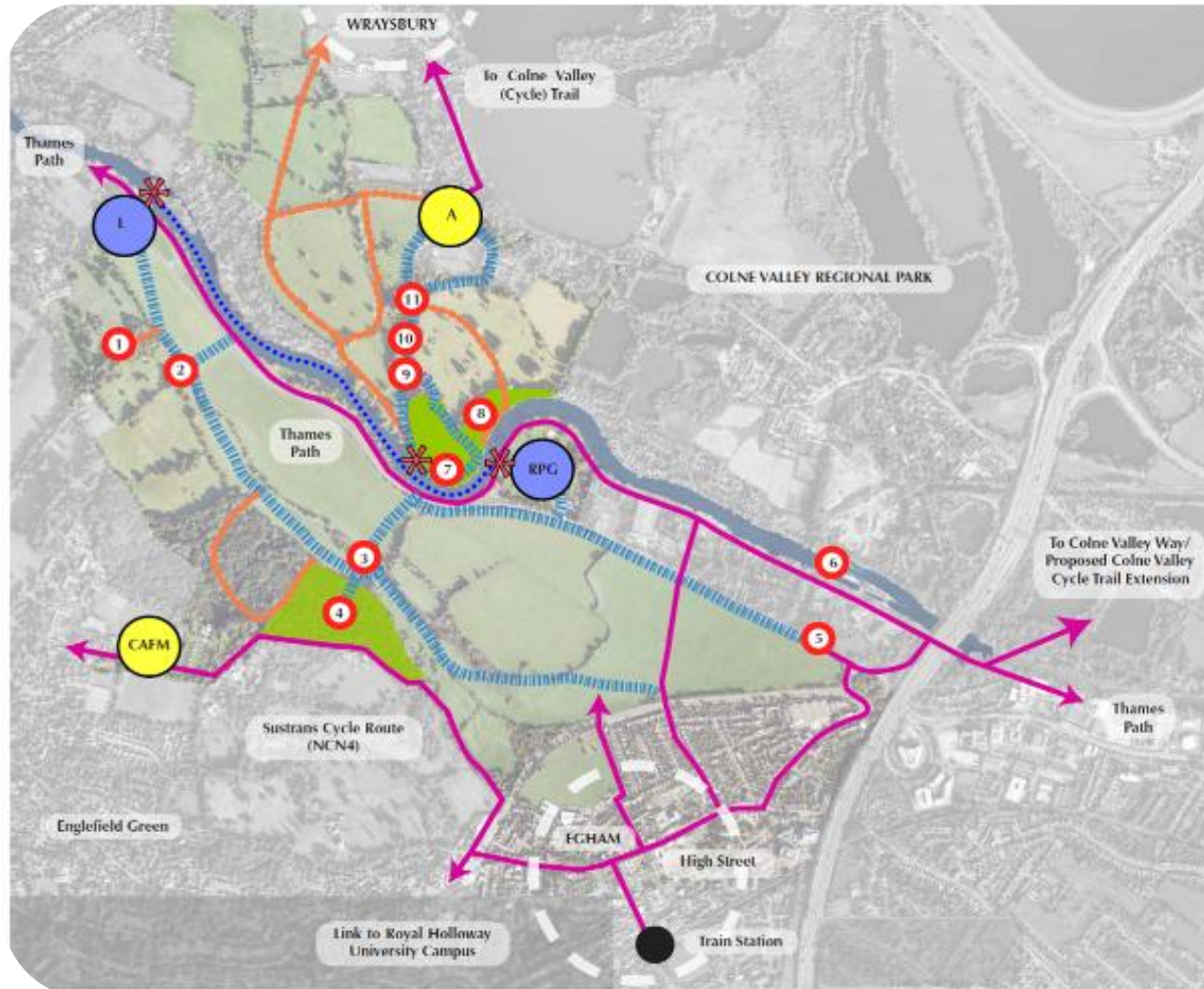
H Staines Road Houses & Gardens



Gateways and hubs



The Masterplan & legacy



Key

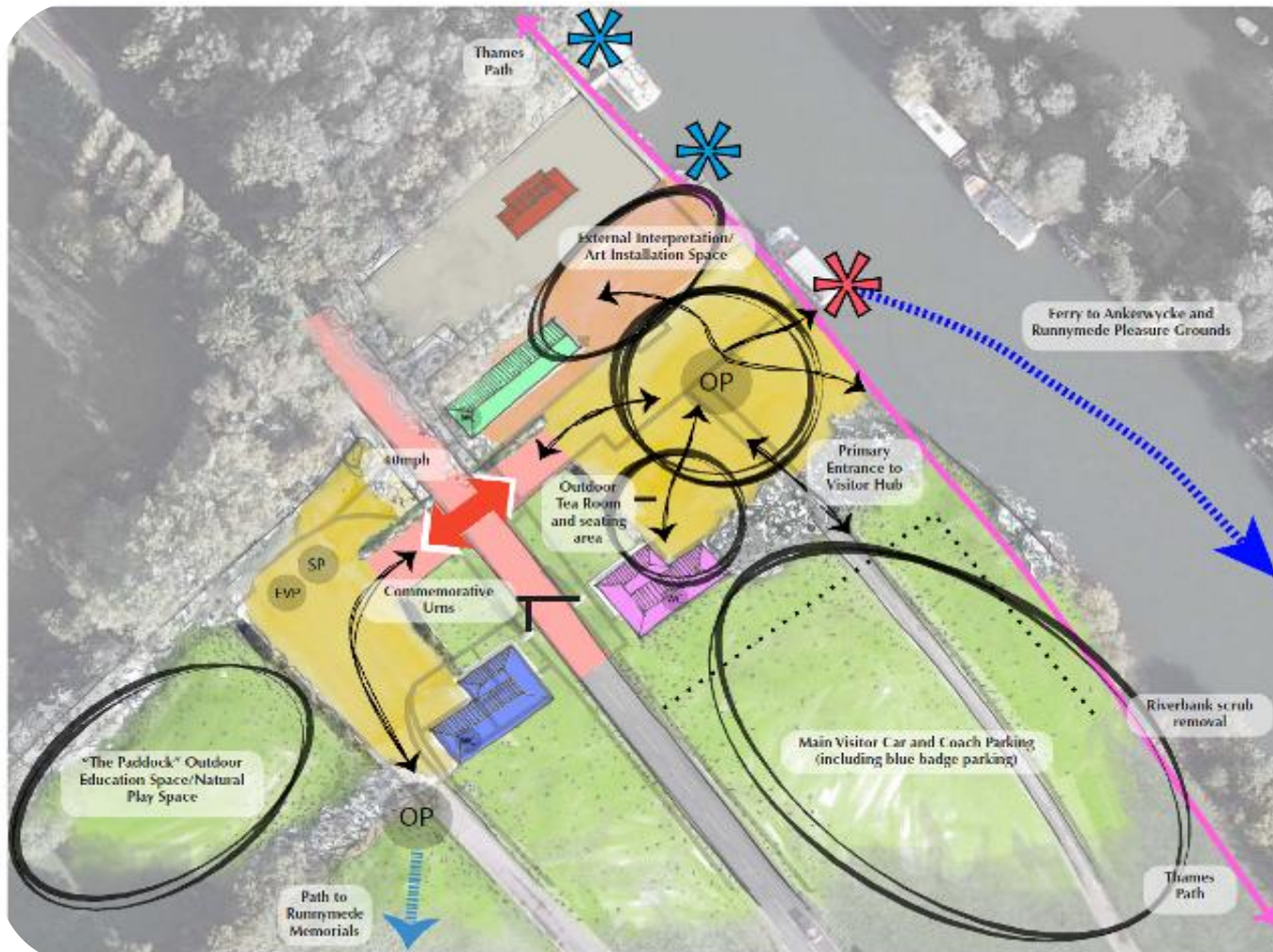
- Gateways
- Primary Visitor Hub
The Lodges
- Primary Visitor Hub
Runnymede Pleasure Ground
- Secondary Visitor Hub
Ankerwycke Farm
- Secondary Visitor Hub
Commonwealth Air Forces Memorial
- Focal Points:
 1. JFK Memorial
 2. Magna Carta Memorial
 3. Langham Pond
 4. Cooper's Hill Woods
 5. Lutyens' Kiosks
 6. Bell Weir Lock
 7. Ankerwycke Ferry Landing Stage
 8. Ankerwycke Riverside Woods
 9. Ankerwycke Priory and Pleasure Gardens
 10. Ankerwycke Yew
 11. Ankerwycke Mansion Gardens
- Natural Play Trails
- Ferry Landing Point
- Ferry Link
- Primary Link (Walking and Cycling)
- Primary Link (Walking)
- Secondary Link (Walking)



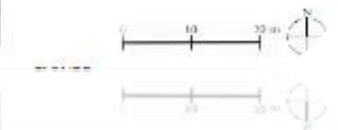
Runnymede visitor hub



The Masterplan & legacy



Key	
	Cafe/Tea Room
	Education/Multi-Use Space
	Exhibition Space
	French Brothers Riverboat Cruises
	Orientation Point
	Proposed Landing Stage
	Existing French Brothers Landing Stage
	Visitor Circulation
	Primary Link (Walking and Cycling)
	Secondary Link (Walking)
	Pedestrian Crossing
	Toilets
	Education Visitor Parking
	Staff Parking
	Low Wooden Posts



Possible locations for new commission

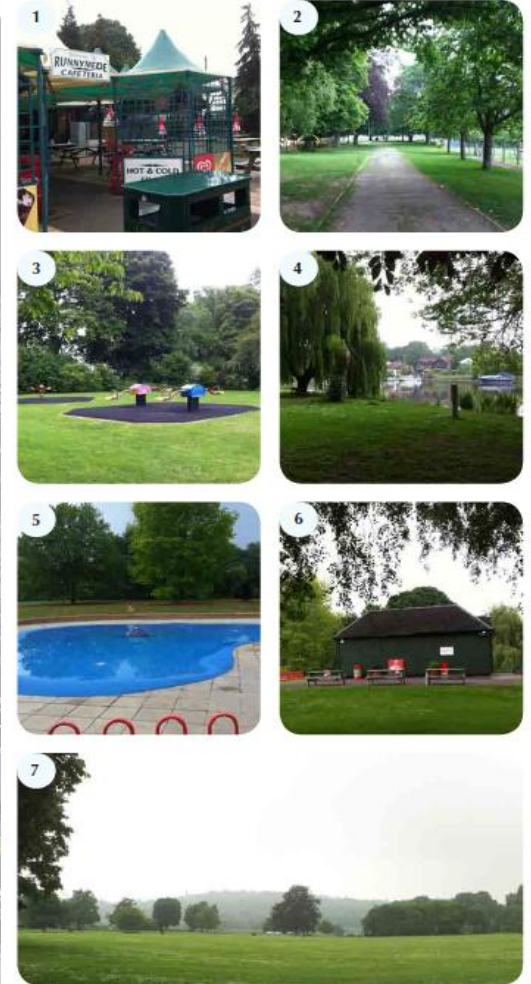


The Masterplan & legacy



Runnymede Pleasure Grounds: Analysis

The Masterplan & legacy



Runnymede Pleasure Grounds: Current facilities

The Masterplan & legacy



Potential RPG site improvements

- Subject to securing the required finance, the following improvements are being considered for Runnymede Pleasure Grounds:
 - New catering facility with complementary interpretation;
 - New play areas for younger and older children;
 - Children's recreational water feature;
 - Additional public toilets;
 - Improved car parking payment system;
 - Joint branding for branding, signage, interpretation and promotion;
 - Improvements to main entrance and car park layout.

Access & Highway Improvements

A308

- Installation of crossing points and traffic calming measures
- Coordination with Egham Sustainability package and Runnymede Roundabout

Sustainable transport

- Review of additional cycling and walking paths
- Access from Egham to Runnymede meadows

Proposed Road Closures

- 15 June 2015

Event Programme



Event Co-ordination



HOUSES OF PARLIAMENT



THE ROYAL BOROUGH OF
WINDSOR AND
MAIDENHEAD



Event Programme



Community events

Event Programme



Community events

Event Programme

13/14/15th June 2015 in planning...



Event Programme



Next Steps



Next steps...



THE ROYAL BOROUGH OF
WINDSOR AND
MAIDENHEAD



Questions & Comments



Questions & comments



THE ROYAL BOROUGH OF
WINDSOR AND
MAIDENHEAD

